

Animals on Bikes Eye spy Trail Drive from Molong –Cumnock-Yeoval- to Dubbo Zoo (Once through Molong-Turn left to Cumnock-Yeoval)

This is a wonderful way to see the trail from your car: This is a DRIVE trail and NOT INTENDED FOR STOPPING. Please drive carefully There are also sculptures in each town so please take the time to have a look and enjoy our small villages in Cabonne.



Molong

Morning Tea/ Lunch/ coffee at any of the business in Molong: Take a look back into the past when you visit the olde worlde charm of Molong, with its many poplar trees and lovely, rolling countryside. Only 32 kms from Orange, the main street, being early Austen-European, is classified by the National Trust and you will discover many other beautiful historic buildings scattered throughout the town. Another point of history and interest is the grave of Aboriginal guide to Thomas Mitchell, Yuranigh. Described by Mitchell as "guide, companion and friend", Yuranigh accompanied him on his expedition to Queensland in 1845. When Mitchell heard of his death, he paid for the headstone on his grave, which you will find a short distance from town. Yuranigh was buried according to aboriginal custom with carved trees at each corner of his grave, which indicated he was a man of special honour.

Molong is bustling with history and it shows as you wander down the wide streets. The Railway Station was built in 1886 and was the first terminus for the main western line from Sydney until 1893. Today it houses the public library and an enchanting park that has plenty of room for parking and to take a well deserved break from your travels. Another point of interest is the Coach House built in 1870 and used for stables for the New Royal Hotel. A tapestry is now displayed in the Coach House and this four section, free standing screen depicts the European settlement of Molong and district and is very impressive to see.



Molong is an outstanding farming district, producing wheat, sheep, wool and cattle, with fruit-growing and wineries being important industries in the area. There are several [art galleries, cafes, restaurants and boutique retail stores](#) to cater for the visitor. Molong is also home to charming B&Bs and a recently renovated motel in which to base yourself and explore the [food](#) and [wine](#) of Cabonne Country. Surrounding Molong you will find boutique cellar doors in which you can enjoy a good drop, the vineyard views and rustic ambiances of the cellar doors.

**Call into Caldwell's scrap yard to see your first sculpture
(SET YOUR SPEEDO TO 0)**



Emus on the Run Sculptor: Stewart Caldwell

Description: Chick Emus in nest on large motor bike

Materials: Steel

Placement: Caldwell's Scrap Metal Yard, (RHS) Mitchell Highway, Molong



Frog Extraordinaire Sculptor: Stewart Caldwell and Mark Oates

Description: Chick Emus in nest on large motor bike

Materials: Steel and tin

Placement: Caldwell's Scrap Metal Yard, Mitchell Highway



Horse on a bike: Sculptor Molong pony clubPlacement 2km (RHS)



From little things, big things grow. Sculptor: Molong Preschool

Description: Tree wheel with native animals

Materials: Powder coated steel

Placement: Molong Pony Club ground, approx 3kms from Molong on Cumnock Rd



Rosie the Redback Sculptor: Mal Williams and Graham Fleming

Description: redback spider on bike

Materials: sheets of scrap metal

Placement: Garra rd turnoff, 4.8 kms (LHS)



Packwell Sculptor: John Packham & Stuart Caldwell

Description; Oversize copy of veteran motorcycle with 2 blue heeler dogs on board rounding up the cattle

Distance; 4.8km from Molong Mitchell highway (RHS) amongst trees)

Eye Spy; What animals can you see on and around this large sculpture?



Alphabet Animals on Bikes Sculptor: Cumnock Public school

Description: 26 alphabet animals on bikes

4km apart from Molong to the Dubbo Zoo hanging in trees

Materials: corrugated iron, pop-rivets, old bikes wheels



Bull on a bike

Sculptor: Molong Rugby League Football Club

Description: bull on bike, dark brown with Molong Bulls logo as a head

Materials: Steel & BMX bike

Placement: 6km from Molong on the Cumnock Rd (LHS)



Spikes on Spokes Sculptor: Marriott Family

Description; Spike family of echidnas en route to Banjo Paterson Way Ant Eating Festival

Materials; Saw blades, parts of T Robinson & Co Pty Ltd harvester (circa 1920) & random scrap metal

Distance: 8.4km from Molong (LHS)

Eye Spy; How many echidnas on the bike?



Long Neck Turtle Sculptor: Don Bruce

Description; One heavy turtle on a trike.

Materials : plough discs to make the shell all steel

Placement; 11km in the trees near Norah Creek (LHS)



Jump on Wheels Sculptor: Molong Men's Shed

Description; Kangaroo on a large pennyfarthing

Distance; 11.9km from Molong (LHS)

Eye Spy; What is another name for a kangaroo?



Lizzy Sculptor; Graeme Fleming & Mal Williams

Description; Lizzy the frillneck lizard with handbag and hat on a penny farthing bike

Materials; scrap material from a farm rubbish tip at Bourke NSW

Distance; 13.9km (right hand side)

Eye Spy; What colour is Lizzy's nailpolish?

Draw a kangaroo riding a bicycle here



Ram Dreaming Sculptor: Ivan Pine

Description: Ram on a go-cart

Materials: scrap metal, farm found objects

Placement: Approx 15kms from Molong on Cumnock Rd RHS



Bit between the Teeth Sculptor: Ivan Pine

Description; Horse with arm in the air riding a Go-cart

Distance; 15km (right side)

Eye Spy; Which direction is this sculpture facing?



Slippery Penguins Sculptor; Saint Josephs School Molong

Description: Very busy penguins who love to slide

Materials: bike, slippery dip, iron, drums, ladder, coffee & milo tins

Placement: Approx 15.5kms from Molong on the Cumnock Rd (LHS)



Elvis Kookaburra Sculptor: Parkes Shire Council

Description: A kookaburra dressed as an Elvis impersonator riding a modified penny farthing trike

Materials: only recycled material used, old farm machinery, muffler parts, old fuel funnel, galvanized iron sheets

Placement: Approx 16.5kms from Molong (RHS), near Larras Lee turn off



Rocky, Put That Down! Sculptor: Molong Central School

Description: Rocky is the naughty Molong Central School mascot who ate his bike!

Materials: scrap metal donated by Benny Caldwell

Placement: Approx 17.5kms from Molong (RHS), between fence & tree on "Ironbarks"



Catch Me If You Can Sculptor; Andy Kerr

Description; Wind positional corrugated iron and iron post kangaroo on a bush fire red postman's bike

Distance: 18.5km (left side)

Eye Spy; How does this sculpture spin around?



Rambo Sculptor; Phillip King

Description; Mulsed Ram with horns and 2 blow-flies buzzing around behind

Materials; fencing wire, old cart wheels, auger head and parts from Cumnock backyard tip

Placement; 19.5km from Molong after "Tallowood" on Rosehill Lane corner (RHS)

Eye Spy; How many blowflies are buzzing around this sheep?



A Very Grim reaper Sculptor; Philip King

Description; a mulsed ewe (full dimensional sculpture) Girlfriend to Rambo

Materials; old and discarded steel



Hungry Perchy Sculptor; Cumnock school parents & kids

Description; Macquarie Perch eating a bicycle wheel

Materials; corrugated iron, steel, cds, dvds, wheel

Placement; 3km from Cumnock towards Molong

Placement: "Tallowood" 19.5kms (RHS)



Giraffe travelling from Orange

Sculptor; Christine Weston

Description; tall orange giraffe licking bike

Materials; corrugated iron, flu, bicycle

Placement: 20km (LHS)



Fizzy the Elephant Sculptor; Christine Weston
Description; Bright pink baby elephant with sparkly crown reaching for little pink diamante bike
Distance: 20.3 km and after (LHS under trees)
Eye Spv; What is on the elephants back?



Cow Jumped Over the Moon Sculptor; Cumnock Playgroup

Description; Cow riding a bike and jumping over the moon

Distance: 20.5 km (ILHS)

Eye Spy; How is the cow going to reach the moon?



Hot rod Henny

Sculptor; Andrew and Rhonda Watt

Description; Mother hen & Chickens on a tricycle

Materials; corrugated iron and recycled steel

Placement; 21km (RHS) on edge of Cumnock



Ezyrider Sculptor; Don Bruce

Description; Giraffe riding a trike - corrugated iron cut individually, 1960s plough frame and wagon wheel parts
Placement; 21.5km from Molong and only 0.8km to Cumnock (RHS)

Eye Spy; Which town is this giraffe looking at?



Roadrunner and Coyote Sculptor; Andrew McKenzie

Description; Coyote in a motorized trike with bombs on backseat chasing roadrunner

Materials; mufflers, steel drums, tyres, shocks

Placement; 21.2 km edge of Cumnock (LHS)



Off to the Cumnock Show Sculptor; David Weston

Description; Horse riding a trike with dog and rooster aboard travelling to the Cumnock show

Materials; 44 galloon drum, old grader, 20l drum, tent bits, metal farm scraps from workshop farm scrap heap 21.5 km(LHS)



K-T-Bird" Horse and Jockey Sculptor; David Weston

Description; red, white and blue horse riding a scooter with jockey sitting behind encouraging him to go faster

Materials; 44 gallon drum, 20 litre chemical drums, 4wd shock absorbers, float valve, grader blade, horse drawn cycle mower,

Placement; opposite Cumnock Royal Hotel (RHS)



Sheep Wine and a 3 day growth

Sculptor; Cumnock Royal hotel and patrons

Description; 2 sheep riding bikes

Materials; one sheep solar powered so lights up at night, both made of old fencing wire, steel wheels, plastic bags, wool as moustaches

Placement; Cumnock Royal hotel (LHS)



Turn left at the Cumnock Royal Hotel- McLaughlan St just 500m and stop at Cumnock Police Station (left side)



Hog on a Chopper Sculptor; Mick Bates (Letterbox)

Description; Pig riding a flash motorbike

Eye Spy; What is this pig wearing?



2 Little pigs Next door at 19 McLaughlan St is the other

riding a motorbike Sculptor; Manie Bone

Description: 2 pigs, an owl and lizard on a motorbike

Eye Spy: What animal is sitting on the petrol tank?



Draw your favourite farm animal

Turn back to Obley St, and then turn left at the pub



Penny the Gorilla Sculptor; Mark Giansis

Description; gorilla with baby and banana on back riding penny farthing

Materials; plastic, steel

Placement; Cumnock Amaroo Hall front lawn (LHS)



Sea Eagle lost in a paddock Sculpture: Lou Spicer

Sea Eagle landing on large motorbike doing a mono –made from sheet metal, old wheels, bikes

Placement; opposite CWA building in centre of Cumnock town 150m from Cumnock Royal hotel (RHS)

Eye Spy; What rugby league team does he play for?



Cuddly Koalas Sculptor; Louise Spicer

Description; Koalas sitting on bicycle

Materials; metal, old bike wheels

Placement; in Cumnock 150m from Cumnock Royal hotel (RHS)



Flight of Fantasy Sculptor; Cumnock Village Preschool

Description; Dragon, fairies, butterflies, flashing solar lights

Materials; aluminum and other bits

Placement; Cumnock preschool trees (LHS)



Spotty the Caterpillar Cumnock Village Preschool

Description; 4m long caterpillar sitting on fence- 3 bikes with gumboots. 500m from hotel before bridge on (LHS)

Eye Spy; How many RED gumboots is the caterpillar wearing?



Stop and look at our happy smiling faces on the poles and mural in the park with clean facilities.

Walk around this area and view the sculptures.

Lunch or Coffee at the Café or drinkies at the Pub

Cumnock 2010 Community of the Year –

NSW Regional Achievement Awards

Cumnock is a tranquil rural village located about 4 hours west of Sydney. Cumnock is centrally located between the wineries surrounding Orange, the Dubbo Zoo, Parkes Radio Telescope and the Wellington Caves, so “call in for a cuppa” or lunch at the Cumnock Café and enjoy the historical ambience of one of the smallest towns in the shire. Cumnock is home of the famous Animals on Bikes and you will spot them around the streets. The wide main street is flanked by vibrantly painted telegraph poles and the large shady park has a BBQ and picnic tables, plus a children’s playground with a super-heroes mural. The public swimming pool, tennis courts, [bowling club](#), [golf course](#), squash court, bike tracks, cricket and football oval, showground-camping and pony club, campdraft are all popular facilities. The Playgroup, Pre-school and Public School are well attended.

Cumnock is reliant on the rural sector and much of the farming area is used for wool production, sheep and cattle, and grain growing. Small businesses include a well-stocked General store, cafe, Bowling Club, Royal Hotel, AgNVet rural supplies and stock transportation. Cumnock is a close knit community with many volunteers working together to keep this rural town alive. The Crossroads building and park host regular community events. We are home to the largest 2CR Tower in the southern hemisphere (4.5 km on Baldry/peakhill road if you want to see it) **“We are home to Rent-a-farm house initiative”** -Cumnock residents have also **inspired the “Animals on Bikes”** sculpture trail - over 100 amusing creations along the drive from Molong to Western Plains Zoo-Dubbo

Did you know: Five Cumnock Boys become “Wallabies” and played Rugby for Australia

(1) Leopold Reynolds: (Played for Australia before Wallabies – (2) Christopher McKivat: (3) Jonathon White: (4) Ross Reynolds: (5) Tim Gavin (Tim is the second Gavin to play for Australia) in 1908-09: K Gavin also played for Australia in the first Wallabies tour, and yes they were related back through the generations!

The interesting piece of information that ties these men together is: They all grew up living on properties down the same road! “Burgoon Road” (Now Burrawong Road) Near 2CR -ABC Tower. ☺



Zip along Zebra, the water's getting cold!" Sculptor: the Hiller family

Description; Hippo on sulky pulled by a unicycle riding zebra – made from everything from the tip!

Placement; next door to Cumnock Thrifty link (right hand side)

Eye Spy; What is the hippo sitting in?



Roy and his horse Sculptor; Stuart Taylor (Horse) Andrew & Rhonda Watt (Roy & Bike)

Description; turn of the century horse drawn mower /man and a cycling horse heading off to town

Materials; metal pieces of all sorts, old mower, auger, steel wheels,

Placement; in Cumnock Cross roads park (LHS)



Flying Magpie Sculptor : Gavin Smith

Description; Black and white tin Magpie riding black bike (RHS) on the roof of the old courthouse



Hogan's Hero Sculptor: Mick Bates

Description; Emu on a unicycle camouflaged in the trees on (LHS) Hogan Transport (Left hand Side)



Chicken Trike

Sculptor: Callie Saul
Description; white chickens perched on a red tricycle at 55 Obley St (RHS) 200m from Café Eye Spy; How many chickens can you see?



Posssssssst Box Snake

Sculptor; Andy Kerr
Description; Happy snake on a bike
Materials; RHS off cuts and sheet metal
Placement; 92 Obley st CUMNOCK (Left hand side)



Emu on a Penny farthing

Sculptor: Les Roberts
Description; Very fast pedaling bush chook
Placement; Turn left at Catholic church after bridge (LHS)
Eye Spy; What is the name of the nearby creek?



Gerry the giraffe

Sculptor: Brett Garling
Placement; 2.2m from café (LHS) after railway s-bend



Didyouthinkhesawus?

Sculptor; Dean Butler
Description; Very large dinosaur
Materials; Lots of different sized tyres!
Placement: (LHS) 3.7km



Excited Frog on a Bike

Sculptor: Rob and Alex Murray
Description; A very happy green frog having fun on a penny farthing
Distance; 4.5km from Cumnock café (left hand side)
Eye Spy; What colour are the frogs spots?



Orangutan on a Skate board

Sculptor: Roy Butler
Description; Orangutan eating while riding on blue skateboard made out of wood board
Placement; in paddock about 100m up in hills just after bridge 5 km from café (RHS)
Eye Spy; what is the orangutan eating?



Tandem Snakes

Sculptor: Troy Vickers
Description; Blue tandem bike with two yellow cartoon snakes (male and female)
Placement; after gates of "Homewood" and 6km from Cumnock (LHS)
Eye Spy; How many teeth can you see?



The Horny Rider

Sculptor; Troy Vickers
Description; large silver rhino on a blue bike
Materials; silo, old combine wheels, pipe and eyes PTO covers with solar panels
Placement; 6.3km (LHS)



Elephants on Bikes

Sculpture; Darryl Hodges
Description; Mother Elephant and baby following behind 6.8km (Left hand side)
Eye Spy; what letter can you see on the elephants?

Draw a frog jumping over



Sheep thrills featuring Evil Ken Weevil! Sculptor; James and Emily Hart

Description; Large bike made from scrap machinery parts with weevil attached to bike spoke and sheep on top.

Placement; 8 km after "Yarrangrove" entrance (Left hand side)

Eye Spy; what is the main difference between each side of the sheep?



Yullundry Roo Sculptor; Robert Armstrong

Description; Kangaroo on a Bike and just next to Yullundry woolshed. 10km (Left hand side)

Eye Spy; What is the approx height of this sculpture?



The Powerful Owl Sculptor; Robert Armstrong

Description; Owl on a bike

Materials; Steel, corrugated iron, machinery wheels and old harvester parts

Placement; near Yullundry woolshed (Left Hand Side) 10km



Scrappy Pig Junior Sculptor; Robert Anderson

Description; Pig on trike made from recycled and new steel, placed on dam bank 16.3 km (Right hand side)

Eye Spy; what different colour is this pig sculpture?



The Rabbits Sculptor; Laurelle Neville, Les and Elaine Hunter

Description; Rabbits on a Railway Bike

Materials; Golf balls, feedbin, bikes, paint, sheet iron, witches hats, bed head, trolley on wheels and plough seat

Placement: "Bonfields" 16.5 (Right Hand Side)



The Angry Horse Sculptor: Jasper von Meien

Categories; Best farm animal and most humorous

Description; Horse kicks a bike with back leg

Materials; oil drums, metal chair, bikes

Placement 16.8 (Left hand side)



Duckcycle Sculpture; James Blatch

Description; Duck on bike made from a Bag loader and Sunshine Harvester parts

Placement; 20 km and brown so tricky to see (Right hand side)



Fast Animals on Bikes Sculptor; Wellington Men's Shed

Description; 5 sculptures of Australian and zoo animals made from corrugated iron, scrap metal and old bikes

Placement; 20.km from Cumnock (Left hand side)

Eye Spy; what are the 5 animals in this group?



Yeoval taking Off Sculptor: Yeoval PA & H show society

Description; Yeoval Rugby Eagle and sheep with sash

Materials; corrugated iron

Placement; (Right Hand Side)



"Emu on a unicycle" Sculptor; Jason Guise

Description; Emu riding on a unicycle across the road from Rough riding (left side) 21.5 km on rocky hill

Eye Spy; what is the emu wearing on his feet?

"Mother and Son" Sculptor; Jeff Tanner

Description; kangaroo and joey on penny farthing behind the Emu on a unicycle (left side) 21.5km

Directly Opposite



"Rough riding" Sculptor; Matthew Phillipson

Description; Man stuck in back of cow after falling off bicycle

Distance: 23km from Cumnock and only 1km out of Yeoval (right hand side)

Eye Spy; Why did the man fall off his bike?

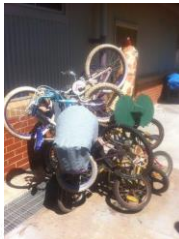


Tommy the Turtle Sculptor; Yeoval Preschool

Description; turtle on a bike with handprints on his back

Materials; steel

Placement; Yeoval central school grounds on obley rd (RHS)



The Crash Sculptor; Yeoval Central School

Description; animals riding in a bike race have crashed causing a jumble of animals and bikes

Materials; wire, bikes, plastic, sheet metal, hessian, paint

Placement; Yeoval Central school (RHS)



Animals riding to the Zoo -Sculptor; Yeoval Central School mural

Description; painted mural on café wall

Placement; Billabong café wall, across rd from school (RHS)

Yeoval –turn right for coffee/lunch– at Billabong Café or Gift and Hardware store, also Royal Hotel .. Also visit the Buckinbah park through town –with sculptures and artworks– Toilets in centre area and also at Buckinbah park.

**Banjo Patterson spent his first seven years in Yeoval
and also built the first multi purpose health centre in NSW-**

- **Stop tripometer and start again from Yeoval Royal Hotel when you continue your journey along Obley road to the Dubbo Zoo**

Yeoval



Situated 75km from Orange, the village of Yeoval sits on the cross roads of [Molong](#), Dubbo and Wellington, making it a convenient place to visit when exploring the region. One of Australia's greatest poets, Banjo Paterson, spent his first seven years of childhood in this village and there are many reflections of Banjo's life in Yeoval including the picturesque Buckinbah Park.

Proactive and dedicated community groups work on many projects and have recently restored the riverbank area into a beautiful park where you can stop and enjoy a picnic or lunch from one of the nearby takeaway stores.

Yeoval is proving to be popular location for tree changers with many moving from Sydney suburbs to the relaxed lifestyle in Yeoval. It has a Central School and a Catholic Primary School, attracting students from surrounding areas.



Eagle Majestic Sculpture; Don Cameron
Description; Made from individual cut pieces of steel, placed on a penny Farthing next to Billabong café/service station



Ram on the Rocks Sculptor; Karen Neale
Description; Ram on a bike on rocks just after Yeoval (right side) 800m
Eye Spy: How many horns does this ram have?



Rex rider Sculptor; Neville Smith
Description; Dinosaur skeleton with sharp teeth riding penny farthing,
made from Tyre, metal, header wheel
Placement; (left) 1km after Yeoval and 64.6 from Newell highway at Dubbo
Eye Spy; What colour is the dinosaur's tongue?



Fish on a Bike Sculptor: Yeoval school P&C assoc
Description; fish on pennyfarthing
Placement; BIKE = 1' pipe, 16mm rod, RHS, charf cutterwheel and crank handle wheel FISH = auger tube off cuts, 1.6 sheet, small lide, rod and bolts
Placement (Right hand side)



Freewheeling Parkes Boar Sculptor: Parkes Show Society
Description; Parkes footy Boars team, radio telescope in front wheel and elvis guitar in back
Materials; steel and paint in Parkes Boars colours
Placement; (Right Hand Side)



Winners are Grinners Sculptor: Wellington Show society
Description; horse on a triek leadin rams home from a winning day at the wellington show. The horse and the sheep represent the livestock exhibited at the show. The horse is wearing boots to signify The Wellington Boot – well known horse racing event. The engine is a back up power source in case horse goes lame.
Materials;all recycled – corrugated iron, steel pipe, chain, wire and motor, front wheels are old steel plough wheels and back are horse drawn harvester (RHS)



Flash Ralph Sculptor; Bob Hansford
Description Emu on a bike made from chain, cog, recycled machinery parts
Placement; 11km from Yeoval **at Obley turn off** (LHS)



Pigs Might Fly Sculptor; Lyn Press
Description; Pink pig with wings on treadmill bike
Placement; 11km from Yeoval on right hand side **at Obley turn off** (RHS)



Caterpillar Pirate Caterpillar on (LHS) at entrance to property after Obley Bridge



Weevil Knieval Sculptor: TAFE Outreach
Categories: Best sculpture made by community group
Description; large weevil with baby weevil in tow
Materials; steel
Placement; at Wambangalang (LHS)



Aussie Bush animals Sculptor: Ted Ward
Description; Kangaroo, Emu and Koala
Materials; wire, scrap metal, corrugated iron
Placement; Wambangalang education centre (LHS)



Spider on Bike Sculptor; Murray Ward
Description Black spider on bike
Placement; "Hampton" letterbox (right hand side)
Eye Spy: How many legs does a spider have?



Bug on a Bike Sculptor; Anna McIntyre
Description; Small Dragon fly made of Steel, wire and bubble wrap
Placement; 200R Obley rd Toongi (left side) 45km
Eye Spy; What is the mailbox?



Going Home Sculptor; Robert Miller
Description A Black cow with her calf in tow heading home from the long paddock.
Placement; "Allambie Stud" 197 Obley st Dubbo (left hand side) 45km
Eye Spy question; What are the numbers on the ear tags?



Ready to Ride Sculptor; Julie Richards
Description; giraffe on bike
Materials; scrap metal (colour bond, guttering) and bike found on property
Placement; 102R Obley rd DUBBO (Left hand side)



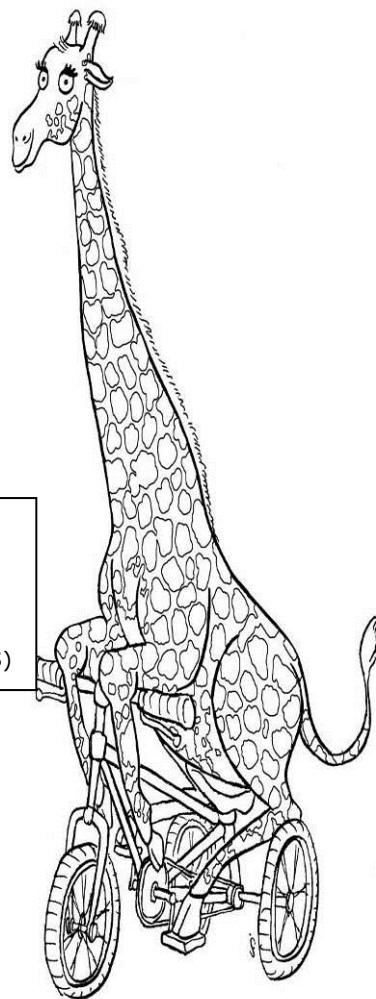
Camouflage Emu He is hidden in the bush (LHS)



Red back spider on his bike
Sculptor; Dubbo Show society Inc
Description; red back spider on bike
Materials; steel wheels, gas bottle, scrap strips of iron, paint
Placement; Benelong rd corner, 13km from Dubbo (RHS)



Pelicycle Sculptor; Rowena Galway +Latex bedding team
Description: A tricky Australian Pelican showing off his balancing techniques on a unicycle.
Placement: Dundullimal homestead entrance (right hand side approaching Dubbo)
Distance ; 64km from Yeoval and 1km to Newell highway (RHS)
Eye Spy question; What material is the pelican made from?



We hope you enjoyed spotting the different animals and playing Eye spy on yc
Banjo Patterson Way/ Obley rd.

There will be new and exciting paddock art sculptures every 2 years....so please come again!
"Animals on Bikes" wrapping paper/tourist map available for \$2 from local Tourists centres and cafes.

www.animalsonbikes.com.au

would like to thank www.cabonnecountry.com, www.dubbo.com.au and www.orange.nsw.gov.au
for supporting our community project.

Information produced by: Cumnock & District Progress Association

P O Box 22

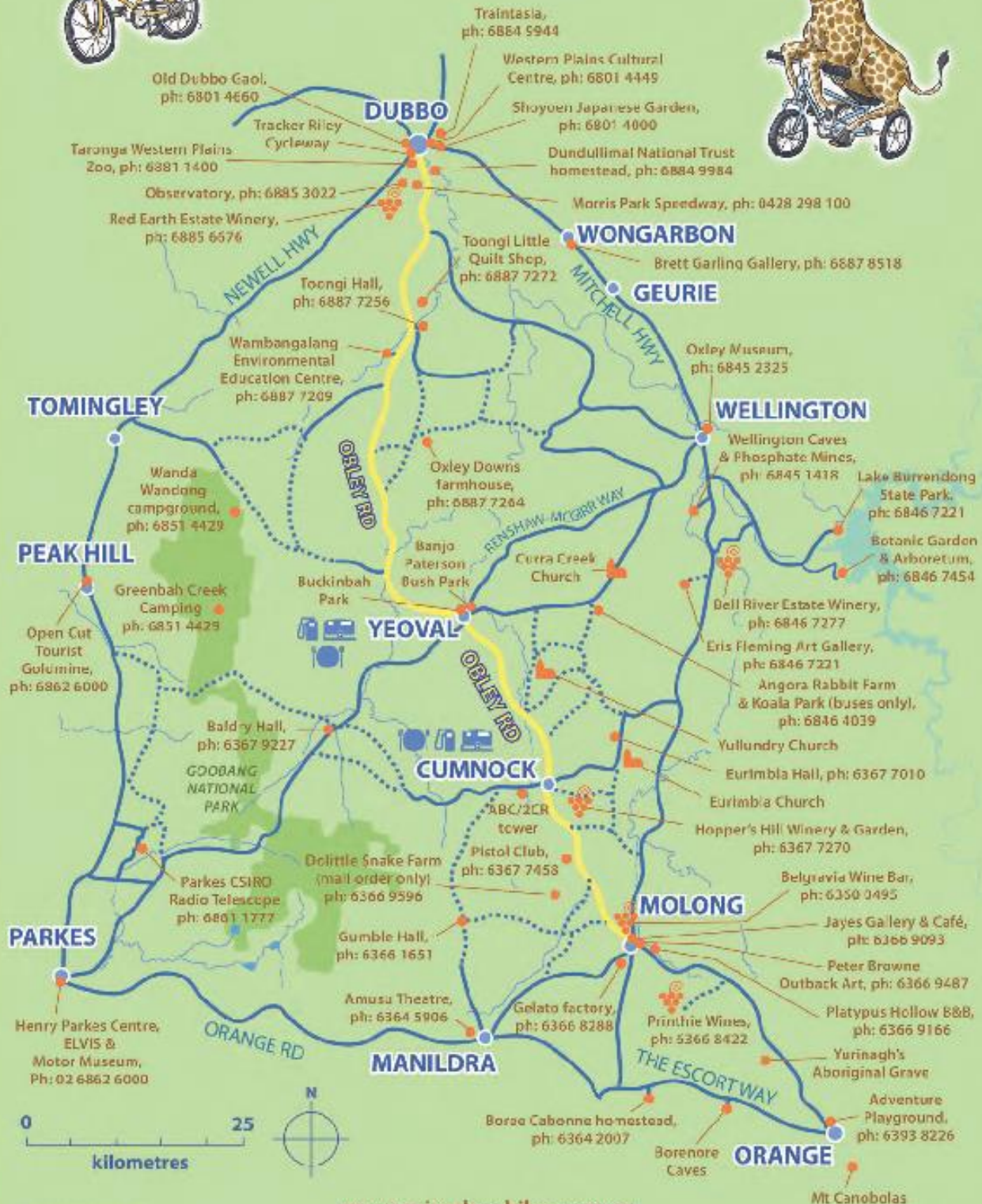
Cumnock NSW 2867

weaniewatt4@bigpond.com 02:63661638



ANIMALS ON BIKES

Obley Rd, between Dubbo and Molong



Last updated Nov 2015

www.animalsonbikes.com.au